

# "Twin windows" with Window Pans, RECESSED Window Flashing Details

Using **CORNER FLASH®** BY **TLS LABORATORIES** and **Fortifiber Flashing and Sealant** products.

Eligible for the 15 Year **Fortishield Warranty**

1. THIS DRAWING DEPICTS THE APPLICATION OF A PATENTED FLASHING SYSTEM BY:

**GENE SUMMY - TLS LABORATORIES**

Materials by:

**THE FORTIFIBER BUILDING SYSTEMS GROUP**

2. VERIFY WINDOW INSTALLATION WITH WINDOW MANUFACTURER'S WRITTEN INSTRUCTIONS.

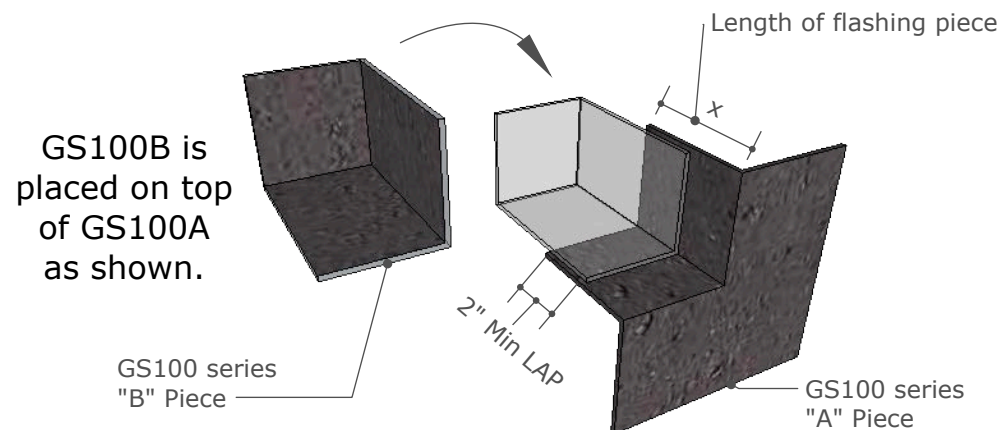
3. UNLESS SUPERSEDED BY WINDOW MANUFACTURER, THE ROUGH OPENING SHOULD BE 1/2" GREATER IN WIDTH AND HEIGHT THAN THE NET FRAME SIZE OF THE WINDOW.

4. VERIFY ROUGH OPENING IS SQUARE, PLUMB, AND LEVEL.

5. WINDOW SILL TO BE SET UPON LEVEL FRAMING SILL WITH CONTINUOUS SUPPORT.  
SUBSTRATES SHALL BE CLEAN, DRY AND UNIFORM AND SMOOTH PRIOR TO FLASHING APPLICATION.

6. WANEED LUMBER WILL NOT BE USED at ROUGH OPENINGS LOCATIONS.

7. THIS SYSTEM IS PATENTED BY US PATENTS:  
#7,735,291 B2 and #9,032,688

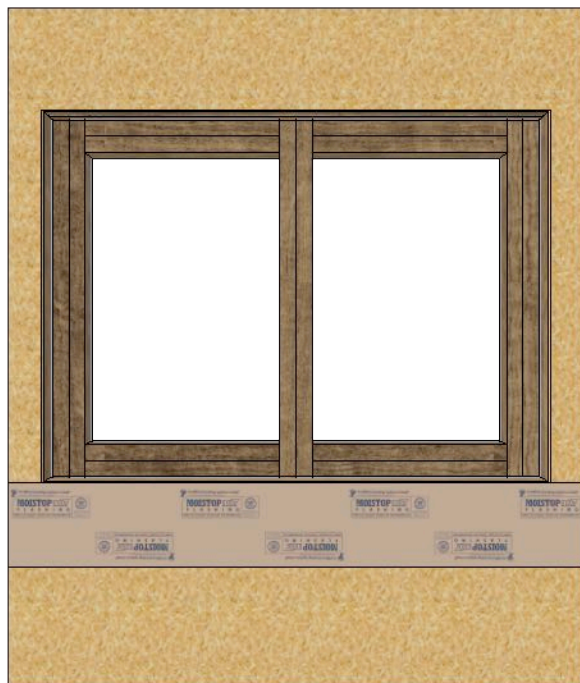


DEPTH OF WINDOW RECESS	LENGTH OF FLASHING PIECE (x)	GS100 SERIES 'A' PIECE NUMBER	COMBINE WITH GS100 SERIES 'B' PIECE NUMBER
2"	2"	GS 102A	GS 100B
4"	3-1/2"	GS 100A	GS 100B
6"	6"	GS 106A	GS 100B
8"	8"	GS 108A	GS 100B
12"	12"	GS 112A	GS 100B
14"	14"	GS 114A	GS 100B

ANY CUSTOM SIZE (x) NOW AVAILABLE. CALL 1.800.310.7673 FOR PRICING.

## STEP 1

Apply Bib/Apron Under Recess Opening



NOTE:

Apply Bib/Apron under recess using **Moistop Next or Moistop PF or Super Jumbo Tex**

This allows the building envelope to be tucked under the materials at a future date.

Staple only across the top edge.

## STEP 2

Apply sealant at the lower corners as shown to prepare for the GS 100 flashing corners.

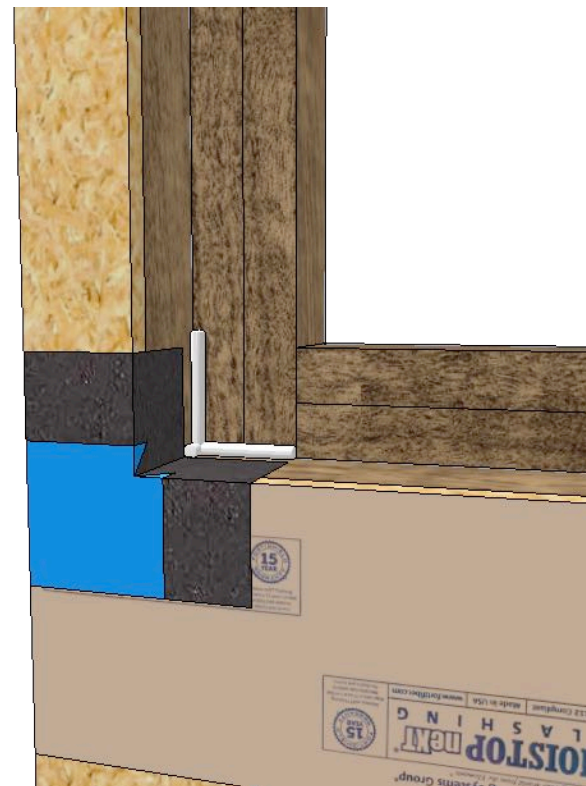


NOTE:

Apply **Moistop Sealant** at the lower corners as shown to prepare for the GS 100 flashing corners.

## STEP 3

Apply GS 100A Flashing Corners

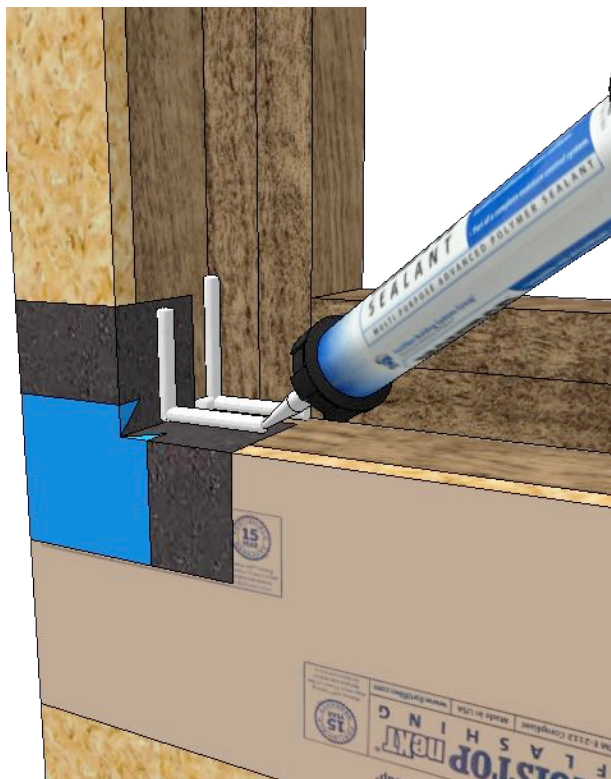


NOTE:

Apply the GS 100 A Flashing Corners on top of the wet sealant and secure in place with a couple of staples.

## STEP 4

Apply Moistop Sealant to prepare for GS 100 "B" piece

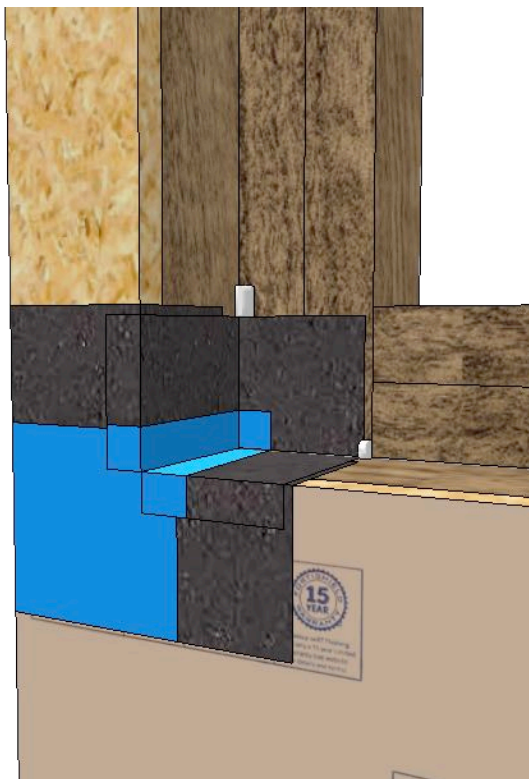


NOTE:

Apply Moistop Sealant to prepare for GS 100 "B" piece as shown.

## STEP 5

Apply GS 100 "B" piece

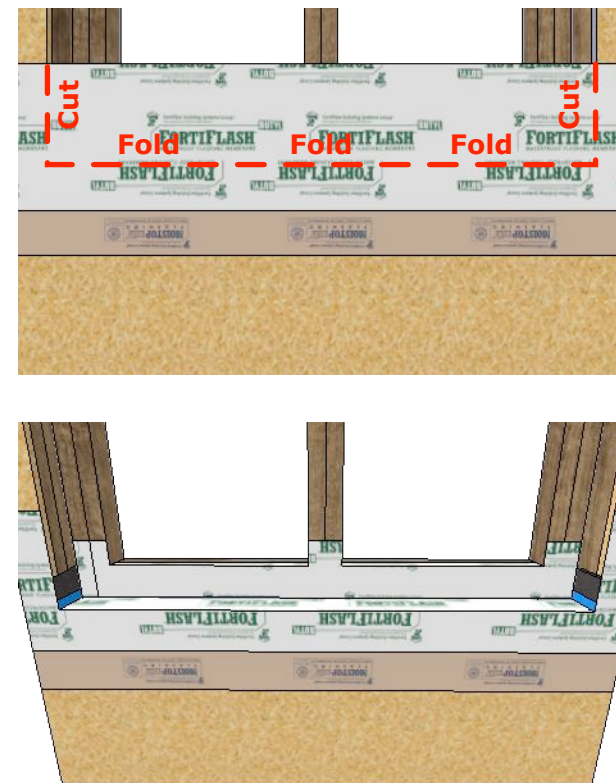


NOTE:

Apply GS 100 "B" piece into wet sealant. If the GS 100 "B" piece is wider than the framing, split it with a razor knife and fold down and away as shown.

## STEP 6

Apply Fortiflash Self Adhered Flashing



NOTE:

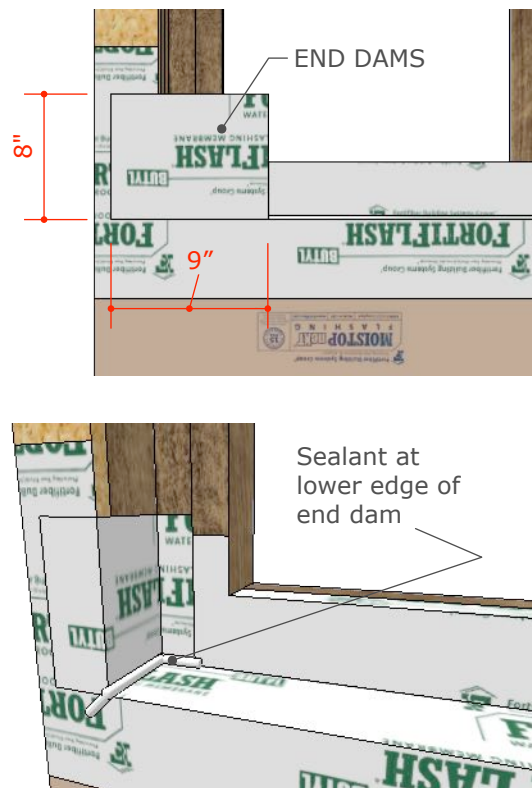
Apply Fortiflash Self Adhered Flashing as shown.

Use Fortiflash Butyl or Fortiflash 40. Span the entire opening, covering the GS 100 Flashing corners. Then place 2 vertical cuts and fold into the opening as shown.



## STEP 7

Apply End Dams for recessed framing

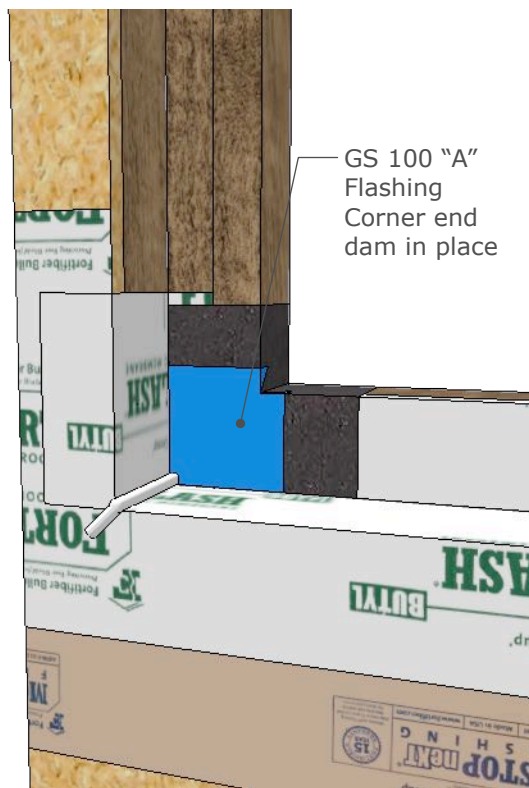


NOTE:

Cut 2 squares of Fortiflash membrane 8" x 9" and apply as shown as end dams. Add Moistop Sealant at the lower edge of the end dam as shown.

## STEP 8

Apply GS 100 "A" end dams for the window pan

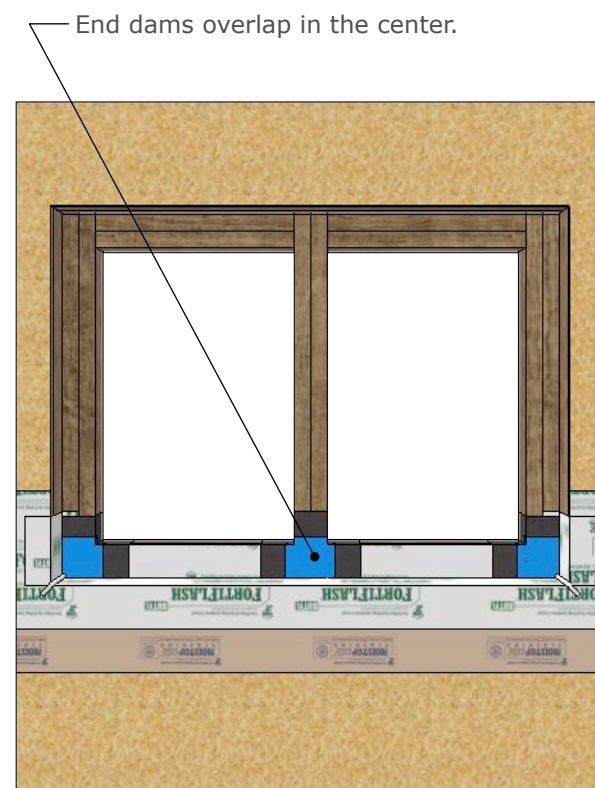


NOTE:

Apply sealant (not shown) and then press GS 100 "A" corners into place.

## STEP 8A

Apply GS 100 "A" end dams

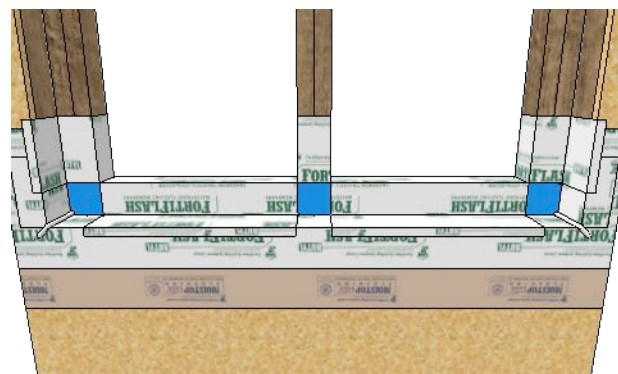
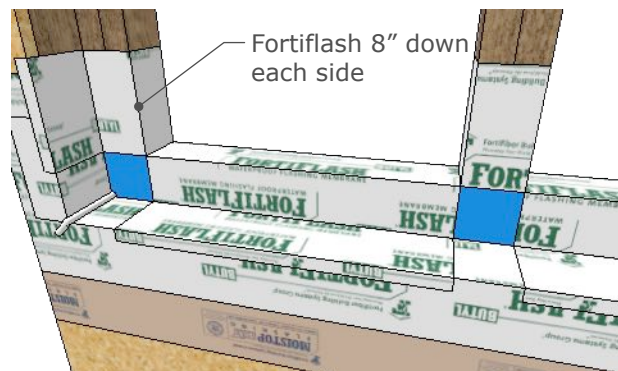


NOTE:

Apply GS 100 "A" end dams to all lower corners of ROs. Overlap the corners in the center.

## STEP 9

Apply Fortiflash to the lower edge of the rough opening.

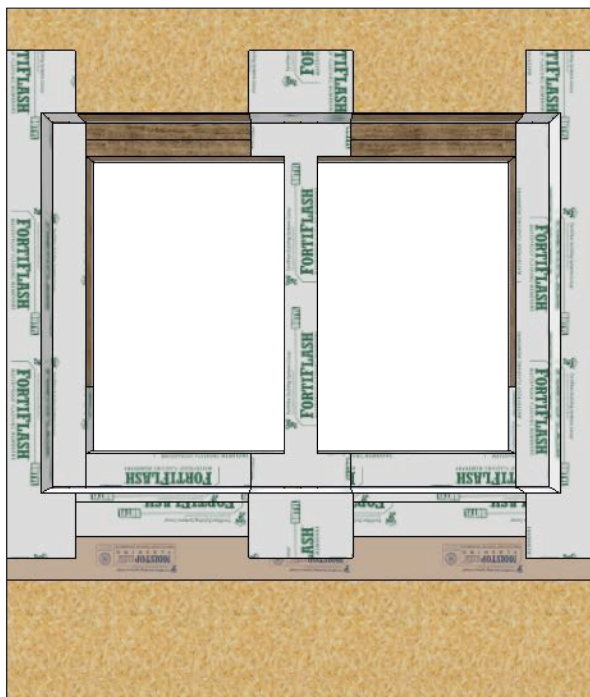


NOTE:

Cut Fortiflash 16" longer than the RO width. Apply the Fortiflash 8" down each side and across the bottom of the RO. Place 2 cuts to the Fortiflash at the lower corners. Fold the Fortiflash down and away as shown.

## STEP 10

Add Fortiflash side flashing.

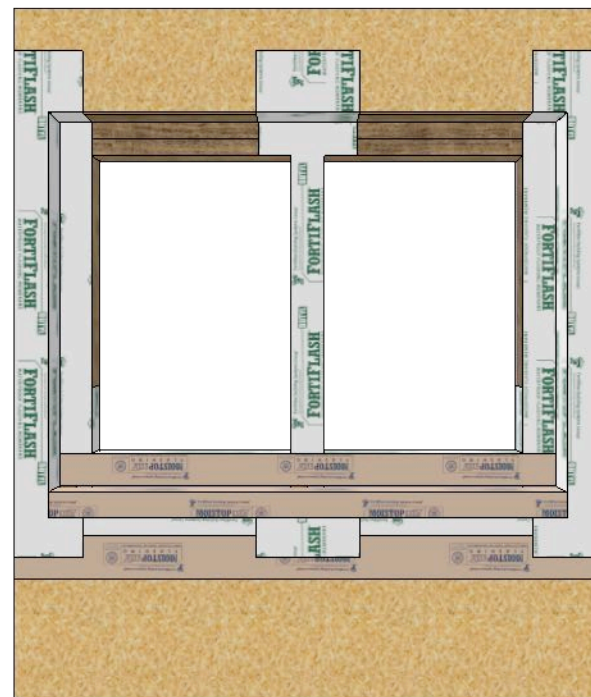


NOTE:

Apply Fortiflash side flashing. In the center, only one course of Fortiflash is applied and rolled into both ROs. Extend Fortiflash 6" minimum onto outermost wall.

## STEP 11

Apply Drainage Bib / Apron under window



**NOTE: Expert Tip!**

Using Moistop Next, Moistop PF or Weathersmart apply a Bib under the window. Extend the bib across the recessed opening. This also serves to protect the recessed flashing from trade damage during construction.

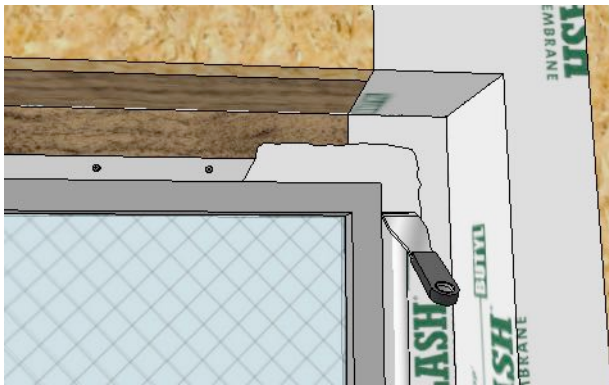
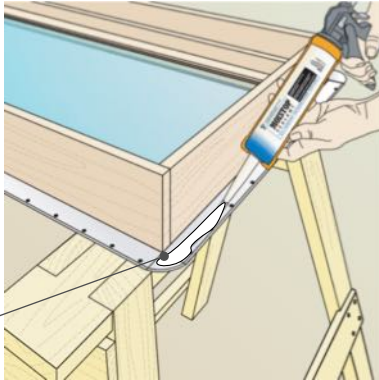
This is also called a **High Performance Skirt** in the Great Northwest. This skirt allows for improved drainage under the window.



## STEP 12

Apply Sealant to the window and install the window.

Apply Moistop Sealant to the outside edge of the nail fin covering the prepunched holes.

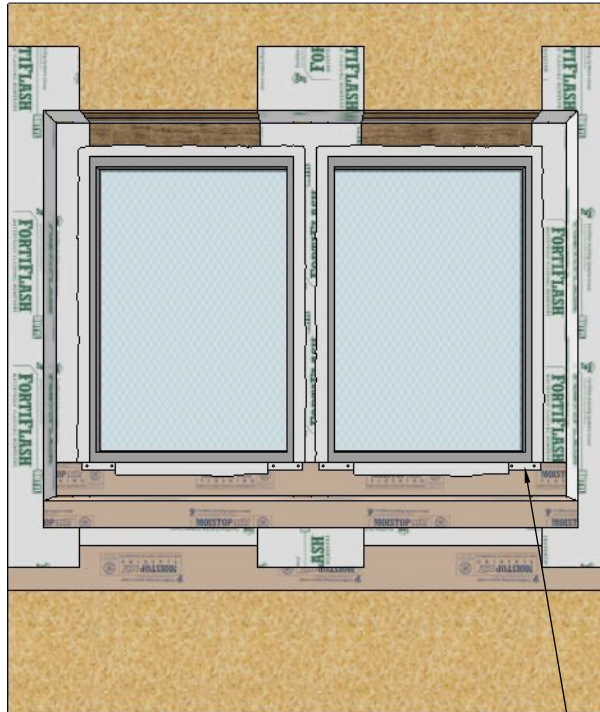


NOTE:

Apply a 1/2" bead of Moistop sealant behind the nail fin on the outside edge resulting in **squeeze out of sealant** through all prepunched holes in the nail fin.  
Note, Moistop Sealant may be applied to the rough opening instead of the window if required.  
Apply additional 1/2" bead of sealant on top of the nail fin and butter flat.

## STEP 13

Sealant application and gaps at lower nailing fins.



3-4" gaps in sealant at both lower corners

NOTE:

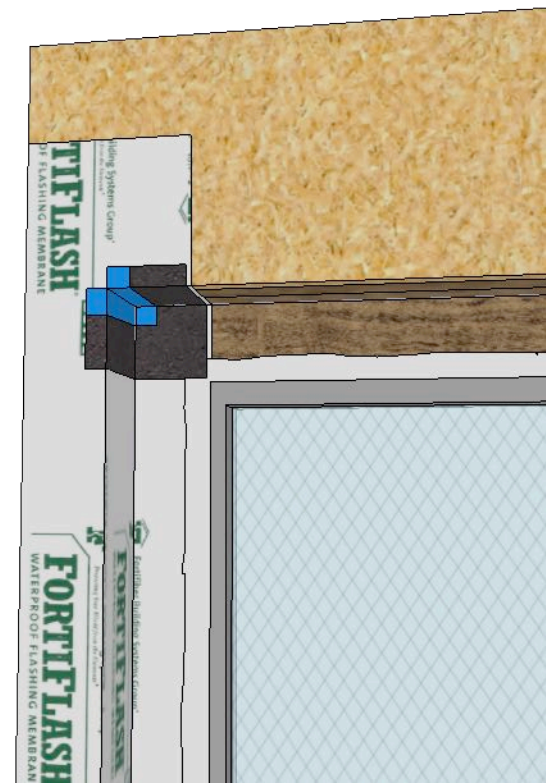
**Alternate method:** Use Moistop EZ Seal on top of the side nail fins in place of buttered sealant. (Not Shown) Always add sealant to the edge of the EZ Seal against the window frame.

Leave Gaps in the sealant at the lower corners of the windows.  
Use 3-4 inch gaps.

**Note- The High Performance Skirt allows water drainage across the entire window sill.**

## STEP 14

Apply upper GS "B" Flashing Corners



NOTE:

Note: Upper Corners may be applied before the window is set if desired. This may help offset the difference in materials between the upper and lower corners assisting in achieving a plumb condition.

## STEP 15

Apply Upper GS 100 "A"  
Flashing corners

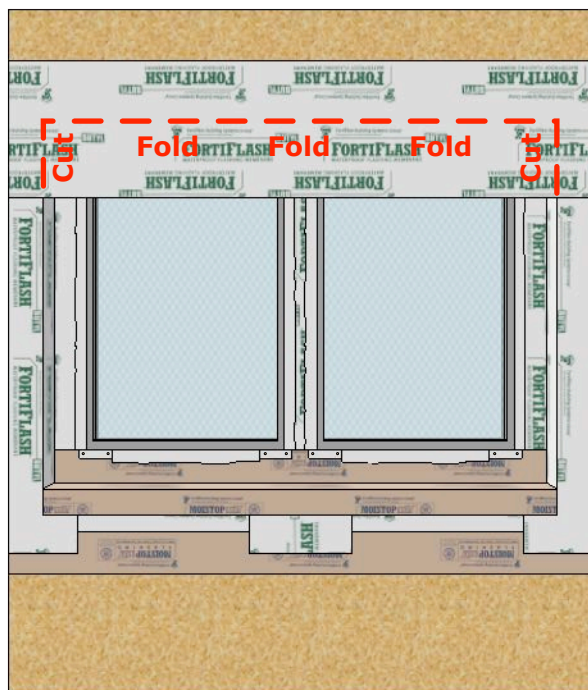


NOTE:

Apply Upper GS 100 flashing corners and secure with staples.

## STEP 16

Apply the upper course of  
Fortiflash membrane

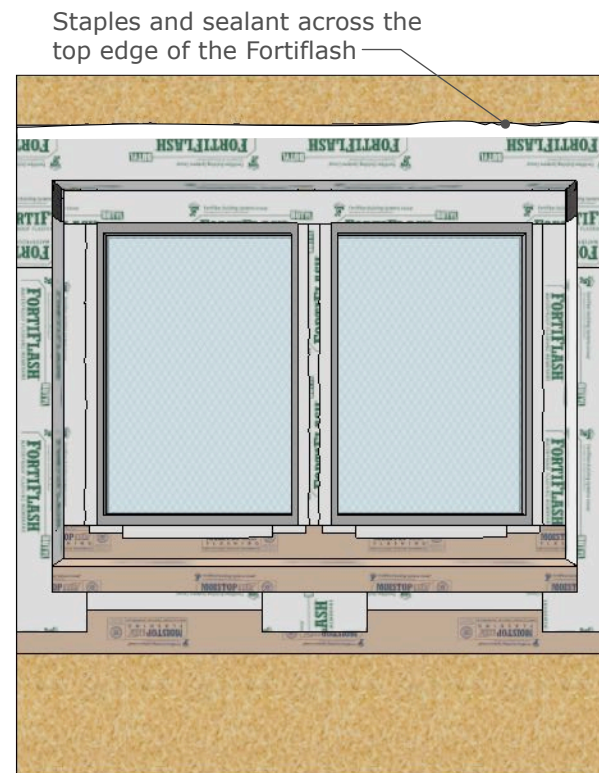


NOTE:

Use Fortiflash Butyl or Fortiflash Flashing. Position correctly and cut and fold into place.

## STEP 17

Apply staples and sealant  
across the top edge

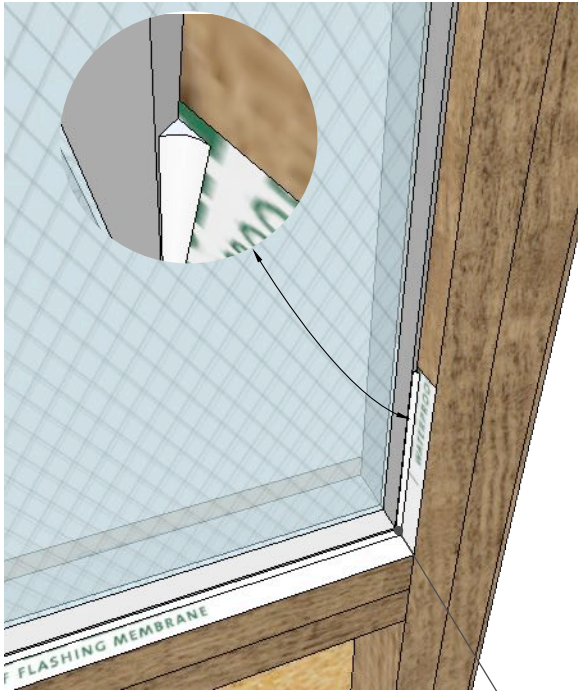


NOTE: **Pro Tip!**

Apply staples and sealant across the top edge of the Fortiflash. These protect against rain and exposure during construction.

## STEP 18

Apply Moiststop Sealant to the inside edge of the window.



Apply sealant at the edge of the window frame to terminate the pan system

### NOTE:

Apply Moiststop Sealant to the inside edge of the window frame to terminate the pan. Apply the sealant 8 inches down each side and all the way across the bottom. Always tool the sealant into place.

## Notes