

Window Installation using AAMA Method B and Lightning Flash Corners

Lightning Flash by TLS Laboratories

1. VERIFY WINDOW INSTALLATION WITH WINDOW MANUFACTURER'S WRITTEN INSTRUCTIONS.
2. UNLESS SUPERSEDED BY WINDOW MANUFACTURER, THE ROUGH OPENING SHOULD BE 1/2" GREATER IN WIDTH AND HEIGHT THAN THE NET FRAME SIZE OF THE WINDOW.
3. VERIFY ROUGH OPENING IS SQUARE, PLUMB, AND LEVEL.
4. WINDOW SILL TO BE SET UPON LEVEL FRAMING SILL WITH CONTINUOUS SUPPORT. If using shims under the window, use a non-compressive inorganic shim material such as plastic horseshoe shims. SUBSTRATES SHALL BE CLEAN, DRY AND UNIFORM AND SMOOTH PRIOR TO FLASHING APPLICATION.
5. WANEED LUMBER WILL NOT BE USED at ROUGH OPENINGS LOCATIONS.
6. DOWNLOAD THIS FILE at WWW.TLSLABS.COM

GENE SUMMY - TLS LABORATORIES

Materials by:

THE FORTIFIBER BUILDING SYSTEMS GROUP



**Fortifiber Building
Systems Group®**

Protecting Your World from the Elements®

Lightning Flash Flashing Corners



800.310.7673
949.348.9291
info@TLSElabs.com
www.tslabs.com

STEP 1

Apply Lower Bib / Apron

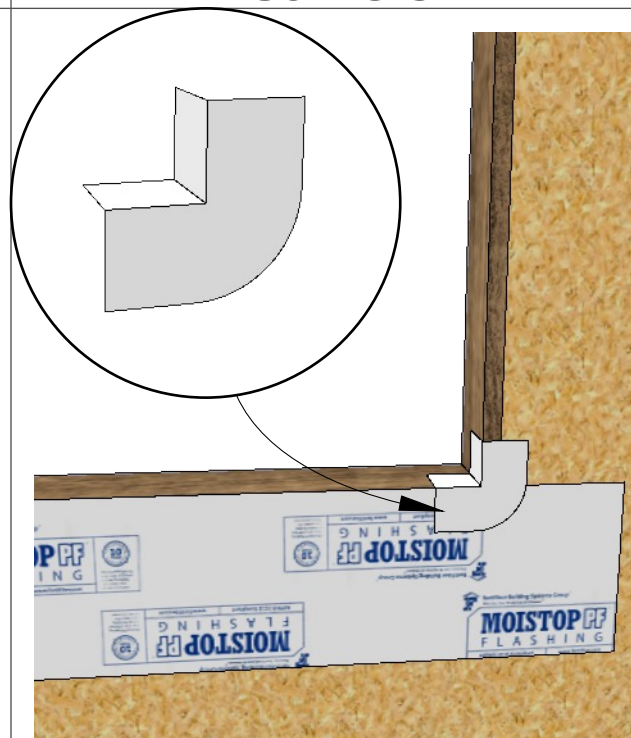


NOTE:

Use Nail-on flashing.
Moistop **NeXt** or Moistop PF.

STEP 2

Apply Lightning Flash Corners

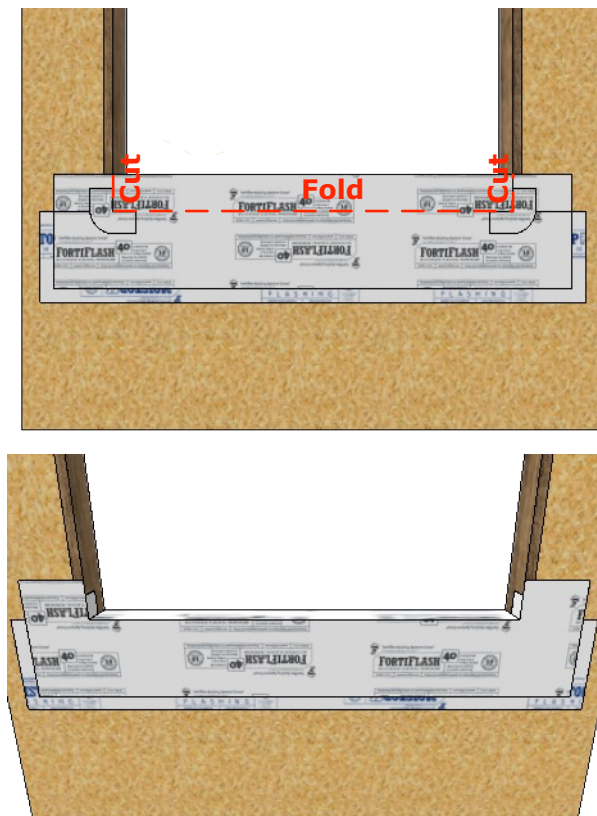


NOTE:

Apply Lightning Flash Corners into a small amount of wet Moistop sealant.

STEP 3

Apply SAF Membrane

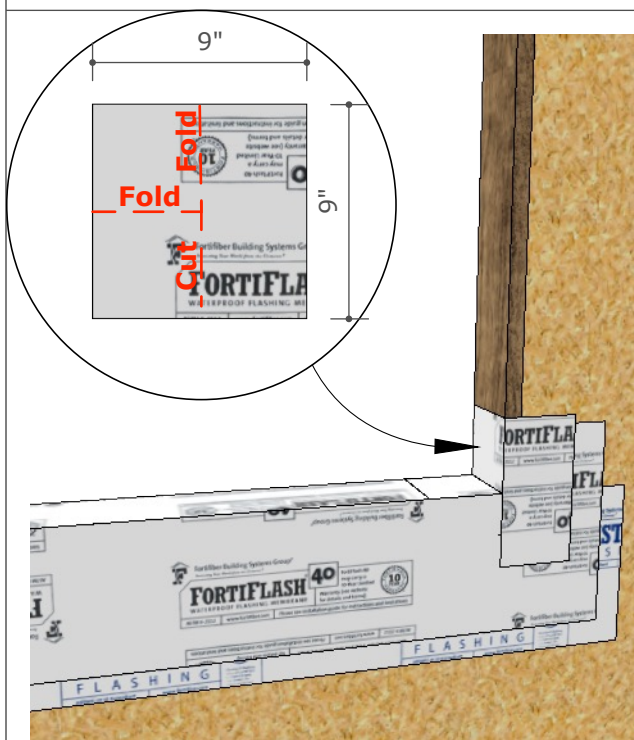


NOTE:

Use Fortiflash Butyl, Fortiflash 40 or Fortiflash as your SAF product.
Cut and layer into place as shown.
J-Roll material flat.

STEP 4

Apply End Dams

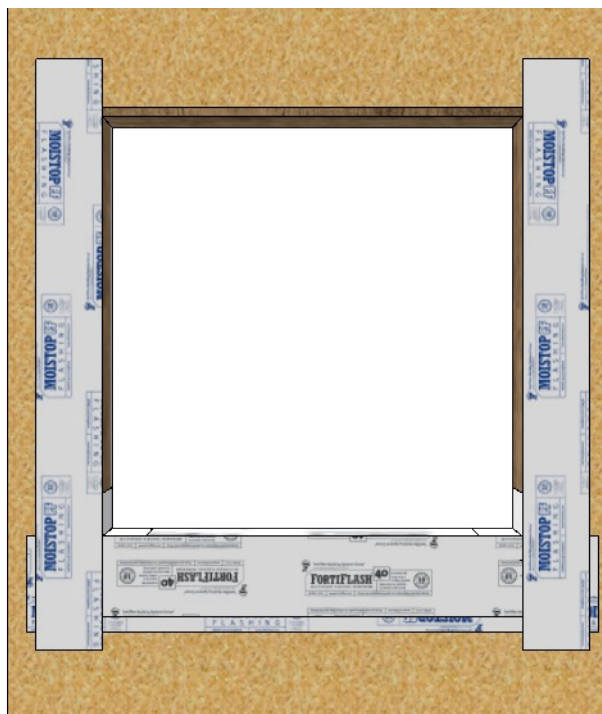


NOTE:

Use Fortiflash Butyl, Fortiflash 40 or Fortiflash to create your end dams. End Dams are applied on top of the Lightning Flash Corners.

STEP 5

Apply Side Flashing

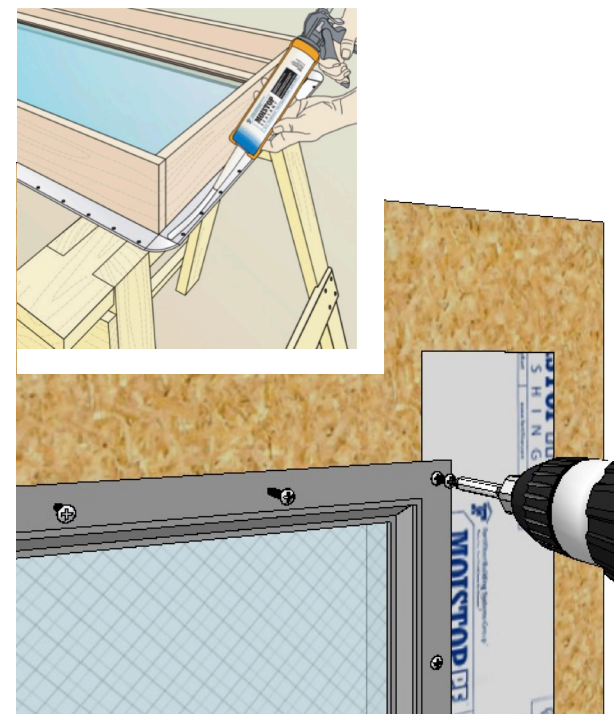


NOTE:

Use Any Moistop or Fortiflash Flashing products for your side flashing.

STEP 6

Install Window



NOTE:

Apply 3/8"-1/2" fat bead of sealant to the rear of the nail fin as shown. Install the window per manufacturer's instructions. Leave two 3-4 inch gaps in the sealant at the lower nailing fin corners. See steps 9-10 drawings.

STEP 7

Apply a Cap-Bead of Sealant



NOTE:

Use Moistop Sealant to create a cap-bead of sealant and butter it flat with a putty knife.

STEP 8

Butter the Sealant Flat

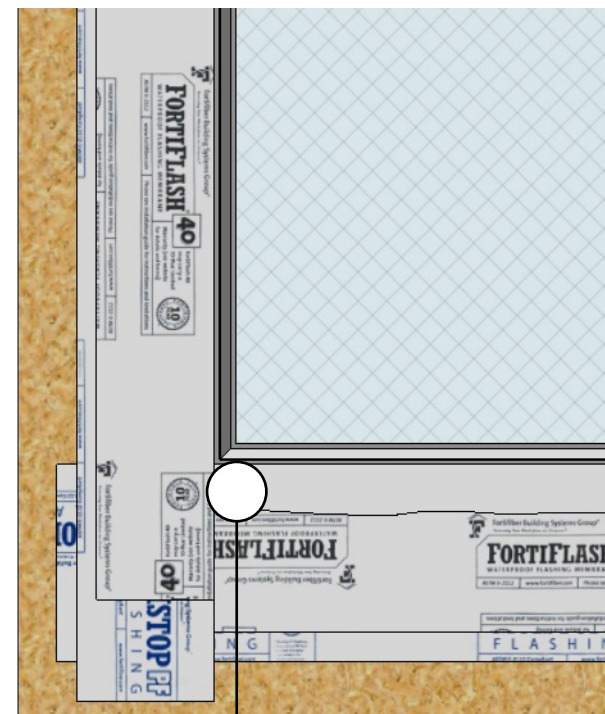


NOTE:

The Moistop Sealant should completely cover the nailing fin, pre-punched holes, and all fasteners. Extend the sealant 1" onto the flashing.

STEP 9

Alternate EZ Seal



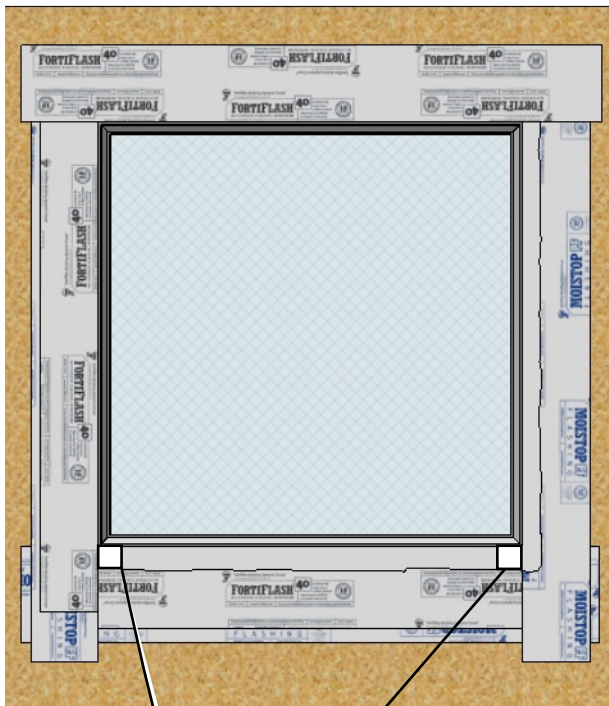
Leave two gaps in sealant at the lower nail fin corners.

NOTE:

If desired place SAF flashing or Moistop EZ Seal on top of the side nail fins instead of using a cap-bead of sealant. J-Roll material flat. Apply a small bead of sealant at the edge of the flashing against the window frame to eliminate wrinkles.

STEP 10

Apply Top Flashing



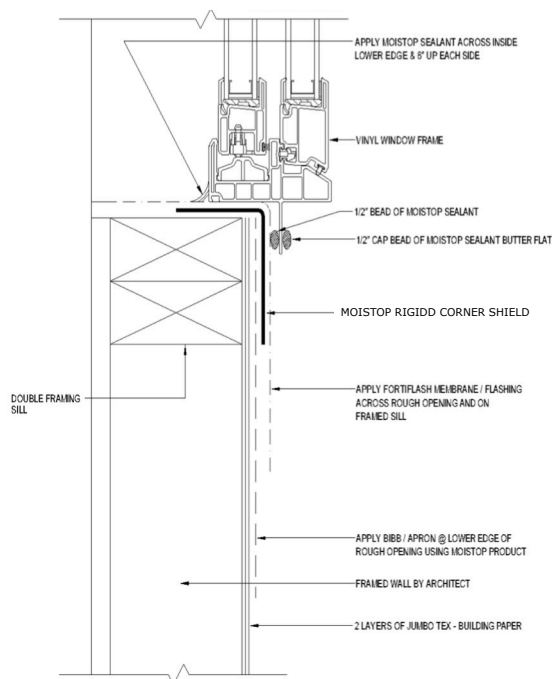
Leave two gaps in sealant at the lower nail fin corners. 3-4 inches each side.

NOTE:

Use Any Moistop or Fortiflash Flashing products for your top flashing. The finished assembly should look like the drawing above.

STEP 11

Side view of sill



NOTE:

Inside application of sealant across the sill and 6 inches up each side is necessary to manage water away from the interior.

Notes

NOTE: