

Toll Brothers Recessed Window Details

Using CORNER FLASH® by TLS Laboratories

1. THIS DRAWING DEPICTS THE APPLICATION OF A PATENTED FLASHING SYSTEM BY:

GENE SUMMY - TLS LABORATORIES

Materials by:

THE FORTIFIBER BUILDING SYSTEMS GROUP

2. VERIFY WINDOW INSTALLATION WITH WINDOW MANUFACTURER'S WRITTEN INSTRUCTIONS.

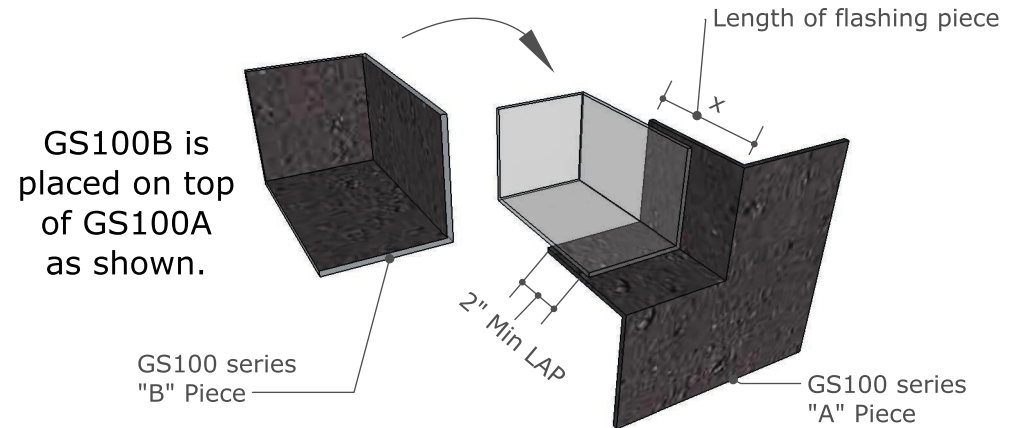
3. UNLESS SUPERSEDED BY WINDOW MANUFACTURER, THE ROUGH OPENING SHOULD BE 1/2" GREATER IN WIDTH AND HEIGHT THAN THE NET FRAME SIZE OF THE WINDOW.

4. VERIFY ROUGH OPENING IS SQUARE, PLUMB, AND LEVEL.

5. WINDOW SILL TO BE SET UPON LEVEL FRAMING SILL WITH CONTINUOUS SUPPORT.
SUBSTRATES SHALL BE CLEAN, DRY AND UNIFORM AND SMOOTH PRIOR TO FLASHING APPLICATION.

6. WANEED LUMBER WILL NOT BE USED @ ROUGH OPENINGS LOCATIONS.

7. THIS SYSTEM IS PATENTED BY US PATENT #7,735,291 B2.



DEPTH OF WINDOW RECESS	LENGTH OF FLASHING PIECE	GS 100 SERIES 'A' PIECE NUMBER	COMBINE WITH GS100 SERIES 'B' PIECE NUMBER
2"	2"	GS 102A	GS 100B
4"	3-1/2"	GS 100A	GS 100B
6"	6"	GS 106A	GS 100B
8"	8"	GS 108A	GS 100B
12"	12"	GS 112A	GS 100B
14"	14"	GS 114A	GS 100B

ANY CUSTOM SIZE NOW AVAILABLE. CALL 1.800.310.7673 FOR PRICING.



**Fortifiber Building
Systems Group®**

Protecting Your World from the Elements®

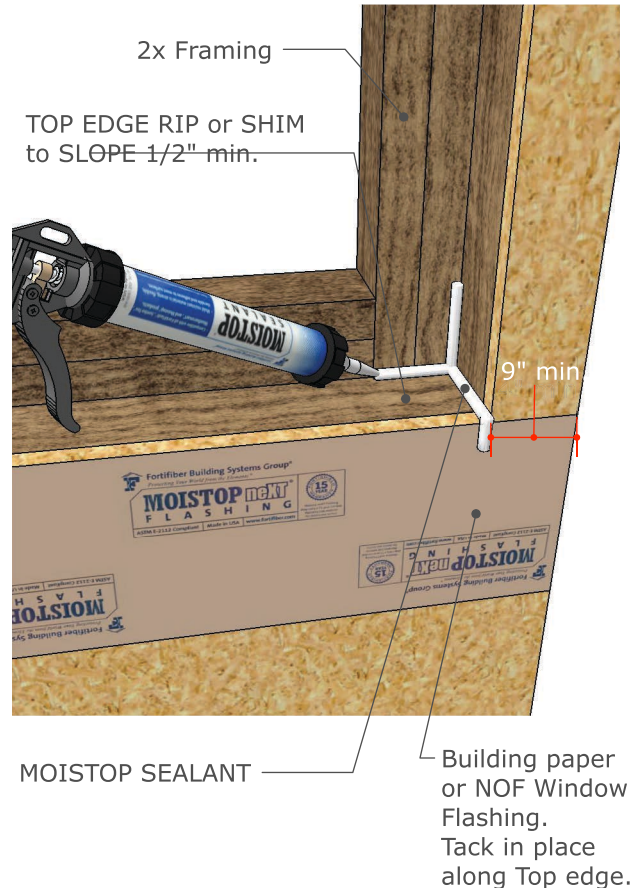
Toll Brothers Recessed Window
Installation using The GS "A" AND "B"
Corner Flash Patented System



800.310.7673
949.348.9291
info@TLSLabs.com
www.tlslabs.com

STEP 1

APPLY BIB AND SEALANT



NOTE:

SAF = FORTIFLASH SELF ADHERED FLASHING (PEEL AND STICK FLASHING)
NOF = NAIL ON FLASHING (MOISTOP "NEXT")
SEALANT = MOISTOP SEALANT

STEP 2

APPLY GS 100 "A" PIECE



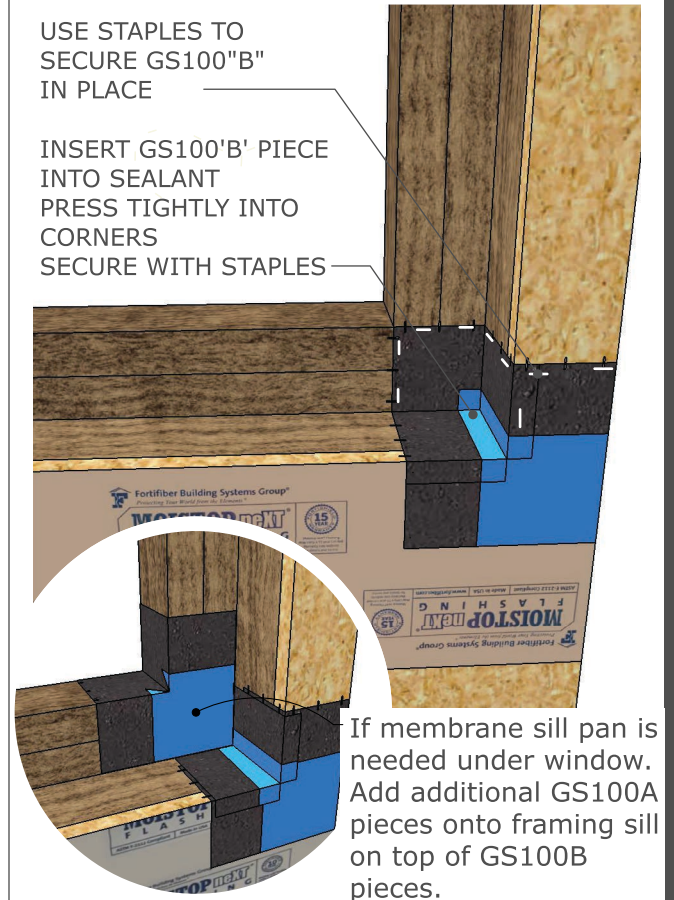
INSERT GS100'A' AND PRESS TIGHTLY INTO CORNERS. APPLY SEALANT ON TOP OF GS 100'A' AS SHOWN

NOTE:

PROVIDE SOLID BACKING AROUND ALL AREAS OF RECESS FRAMING

STEP 3

APPLY "B" PIECE

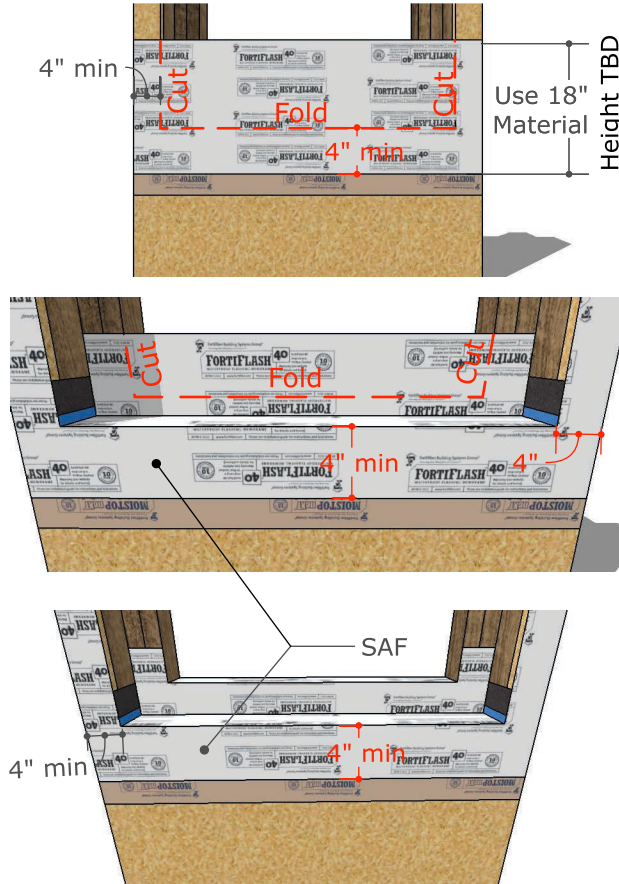


NOTE:

IF MEMBRANE PAN IS USED, TERMINATE INSIDE EDGE OF WINDOW SILL WITH SEALANT TOOLED INTO PLACE AND 8" UP EACH SIDE.
LEAVE GAPS IN SEALANT ON LOWER NAIL FIN.
SEE DETAILS ON FINAL PAGE.

STEP 4

LAYER SAF MEMBRANE INTO PLACE

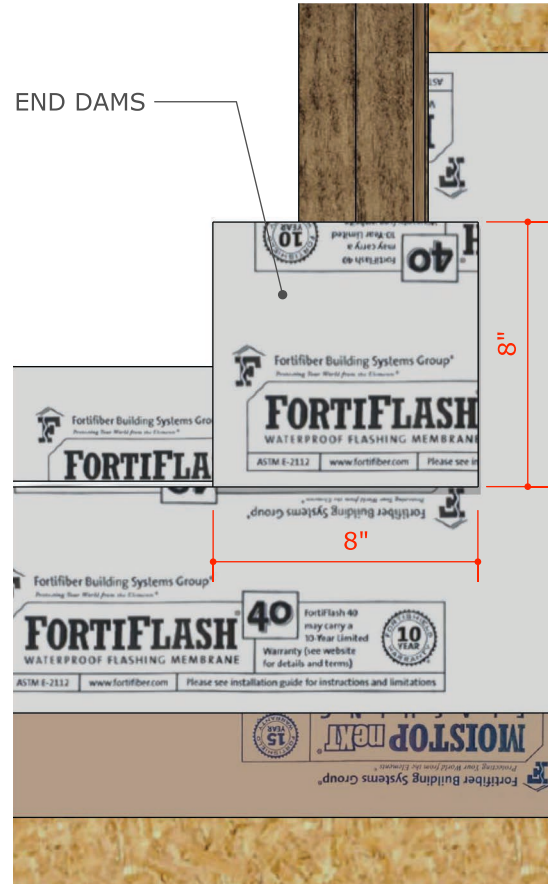


NOTE:

SAF = FORTIFLASH40 SELF ADHERED LASHING (PEEL AND STICK FLASHING)
 NOF = NAIL ON FLASHING (MOISTOP "NEXT")
 CAREFULLY LAYER SAF INTO PLACE AND ELIMINATE WRINKLES WITH 'J' ROLLER
 TBD = 4" RECESS DEPTH + FRAME SILL HEIGHT + 3" ON TOP OF SILL

STEP 5

APPLY END DAMS ON CORNERS

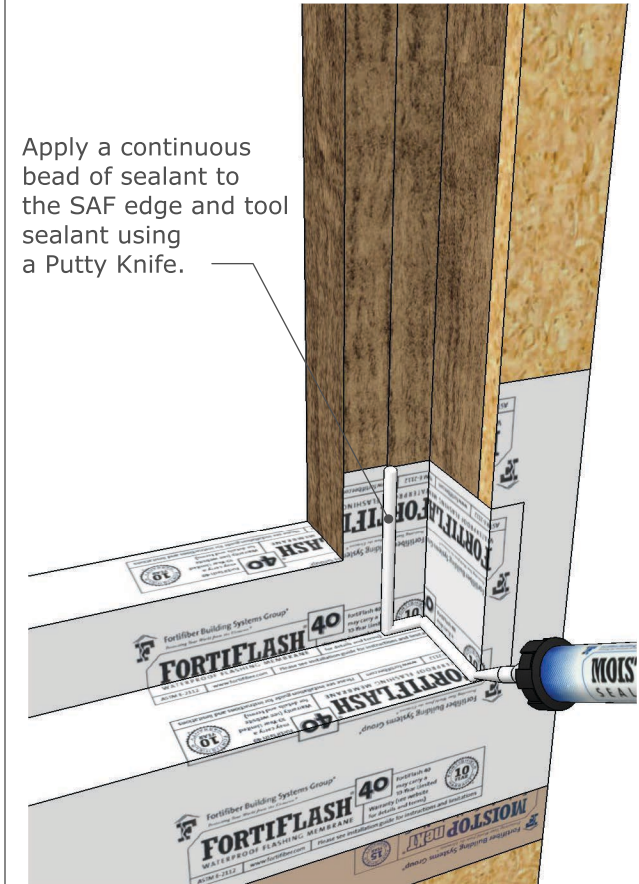


NOTE:

END DAMS (8"x8" SQUARES OR LARGER AS REQUIRED DEPENDING ON DEPTH OF RECESS) WRAP AROUND THE SIDES OF THE RECESS FRAMING AND FRONT WALL COVERING THE SEAM OF THE GS "A" & GS "B" PIECES

STEP 6

APPLY SEALANT

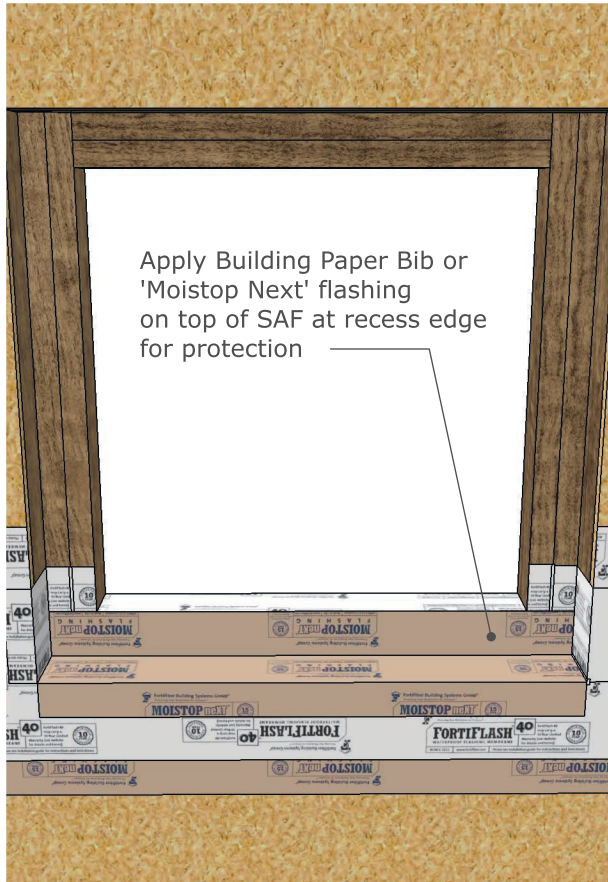


NOTE:

SAF SHEET SHALL BE ROLLED IN PLACE. THE SAF SHALL BE FREE OF WRINKLES OR CREASES AND COMPLETELY COVER THE GS 10X "A" PIECES. USE THE "J" ROLLER FOR COMPLETE ADHESION & ELIMINATION OF WRINKLES

STEP 7

APPLY 'NOF' FLASHING ON BOTTOM

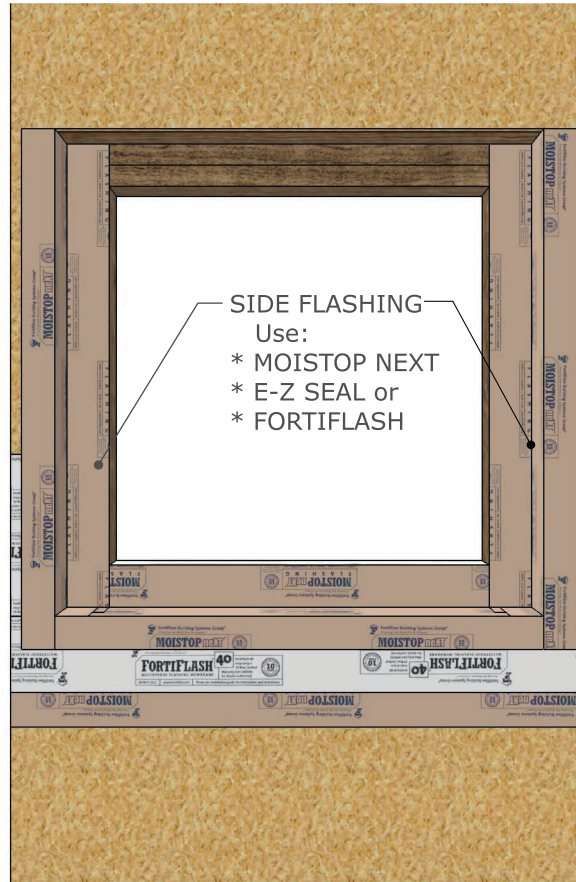


NOTE:

LOWER WINDOW FLASHING LAYERS ON TOP OF BUILDING PAPER BIB.
FIELD VERIFY ALL DIMENSTIONS PRIOR TO CUTTING AND INSTALLING FLASHING COMPONENTS.
VERIFY MANUFACTURER REQUIREMENTS.

STEP 8

APPLY FLASHING ON THE SIDES

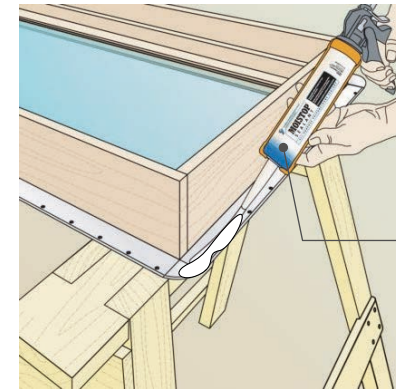


NOTE:

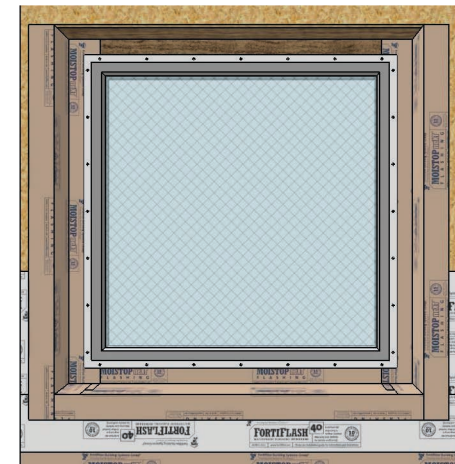
FIELD VERIFY ALL DIMENSTIONS PRIOR TO CUTTING AND INSTALLING FLASHING COMPONENTS.
VERIFY MANUFACTURER REQUIREMENTS.

STEP 9

INSTALL WINDOW



Apply MOISTOP SEALANT around the edges of the window nail fin covering ALL holes.

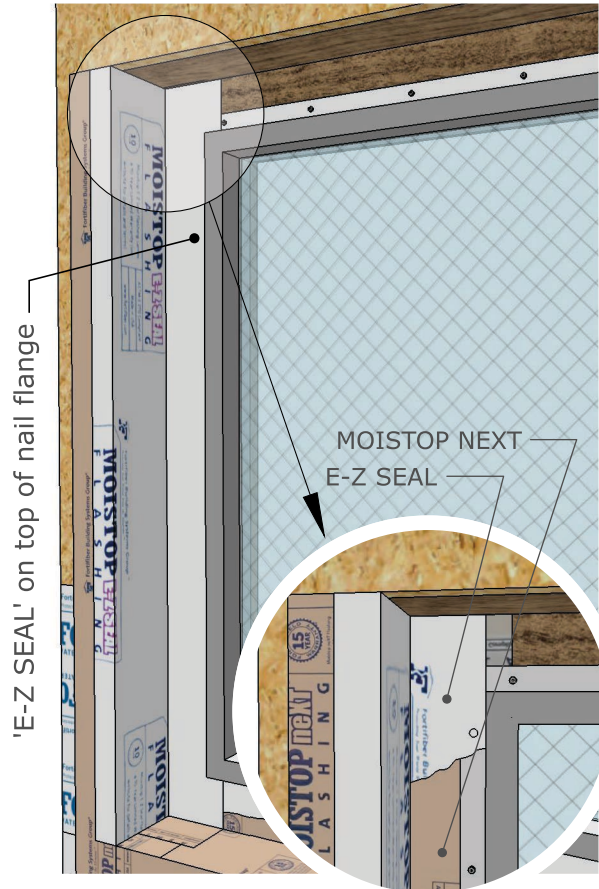


NOTE:

INSTALL THE WINDOW BEFORE THE UPPER GS CORNERS. THE WINDOW NAIL FIN SHOULD NOT BE ON TOP OF THE GS 100 "B" PIECE.
IF FRAMING IS TIGHTER THAN SHOWN, LAYER GS100B PIECE ON TOP OF WINDOW NAIL FIN.

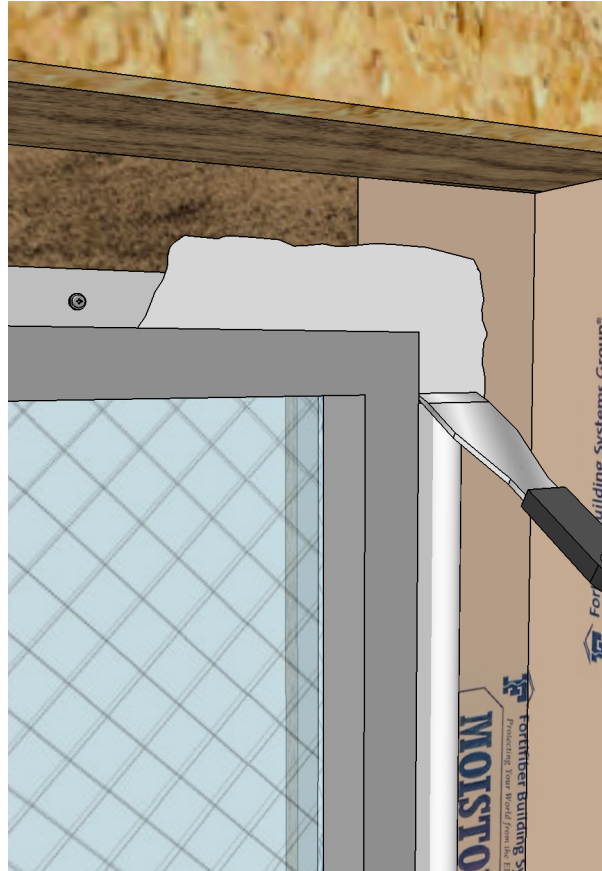
STEP 10

APPLY MOISTOP 'E-Z SEAL' -OR- BUTTERED SEALANT



IF "E-Z SEAL" IS APPLIED

NO FASTENERS IN THE NAIL FIN SHOULD BE SEEN.
E-Z SEAL SHOULD BE ALL THE WAY UP TO THE FRAME OF THE WINDOW AS SHOWN.

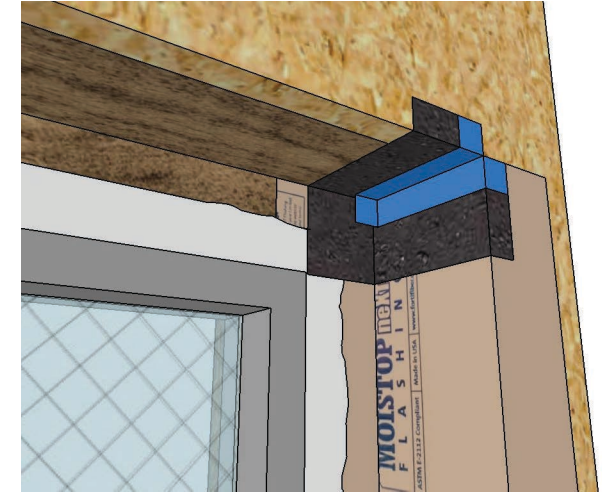


IF BUTTERED SEALANT

APPLY 1/2" BEAD OF SEALANT ON TOP OF WINDOW NAIL FIN ON ALL 4 SIDES AND BUTTER FLAT W/ PUTTY KNIFE.
ALL FASTENERS COMPLETELY COVERED WITH SEALANT.
USE MOISTOP SEALANT BY THE FORTIFIBER BUILDING SYSTEMS GROUP.

STEP 11

APPLY GS100"B" PIECE AT UPPER CORNERS



STEP 12

APPLY GS100"A" PIECE

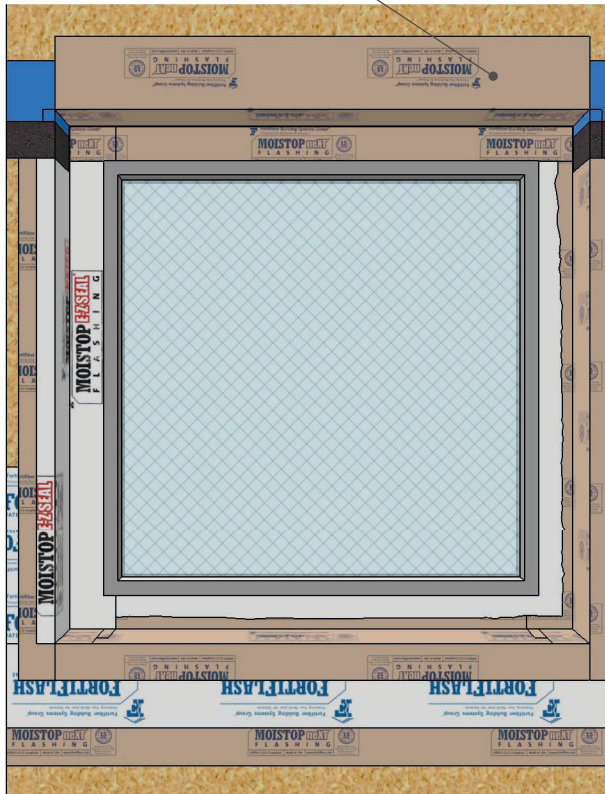
APPLY GS100'A' PIECE ON TOP OF GS100'B' PIECE



STEP 13

APPLY 'MOISTOP NEXT'
ACROSS THE TOP

USE NOF 'MOISTOP NEXT'
AS SHOWN



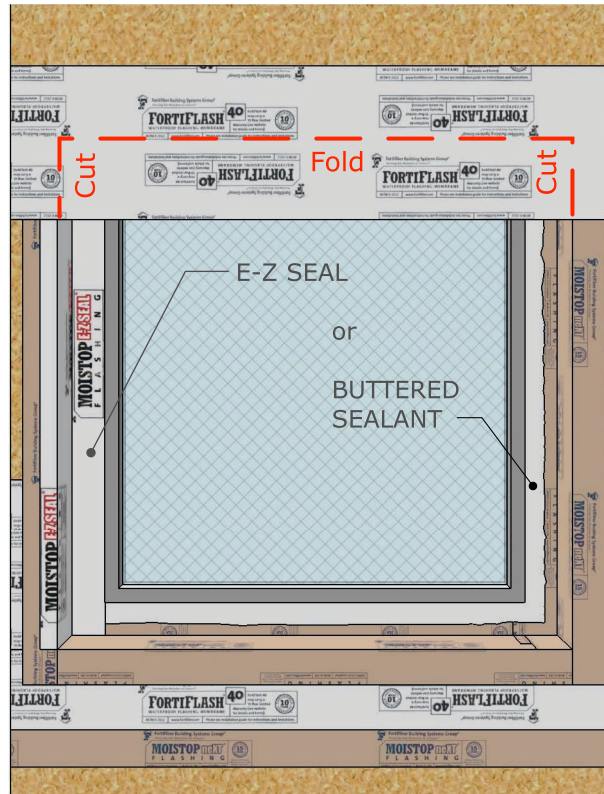
NOTE:

NOF = NAIL ON FLASHING
(MOISTOP "NEXT") BY FORTIFIBER
BUILDING SYSTEM GROUP

STEP 14

APPLY FORTIFLASH ACROSS
THE TOP

USE SAF "FORTIFLASH" AS SHOWN



NOTE:

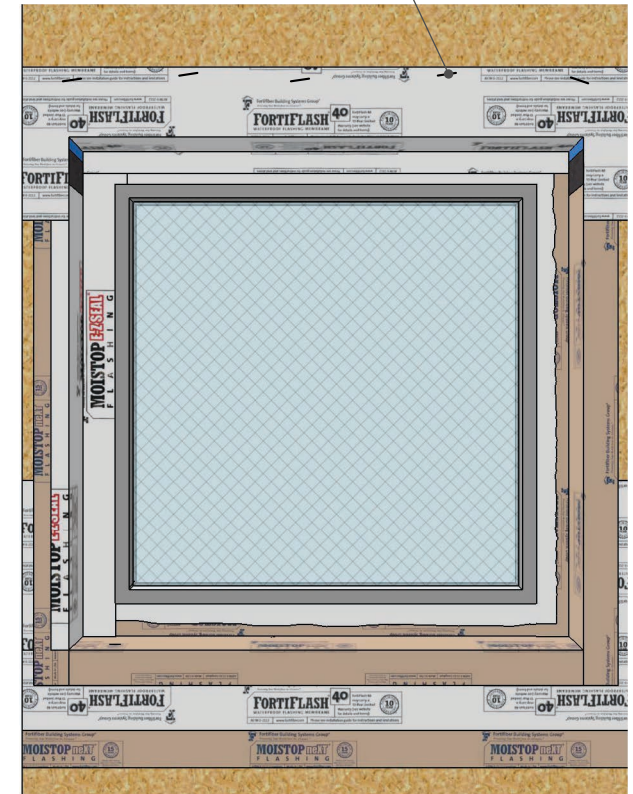
IF E-Z SEAL: APPLY SEALANT AT EDGE
AGAINST WINDOW FRAME AND TOOL
INTO PLACE.

SAF = FORTIFLASH SELF ADHERED
FLASHING (PEEL AND STICK
FLASHING)

STEP 15

TOP FLASHING

USE SAF "FORTIFLASH" AS SHOWN
STAPLES AT TOP EDGE



NOTE:

APPLY STAPLES ACROSS TOP EDGE OF
FORTIFLASH

Suggest apply Moistop sealant across the
top edge of Fortiflash as a final step.

ADDITIONAL MEMBRANE PAN UNDER WINDOW DETAIL

TLS LABS BUTTERED SEALANT METHOD OF WINDOW INSTALLATION WITH PAN
USING LIGHTNING FLASH CORNERS
"ELIGIBLE FOR FORTISHIELD 15 YEAR WARRANTY BY
THE FORTIFIBER BUILDING SYSTEMS GROUP".
AAMA METHOD B

