



Call 800 310 7673
or visit www.tslabs.com

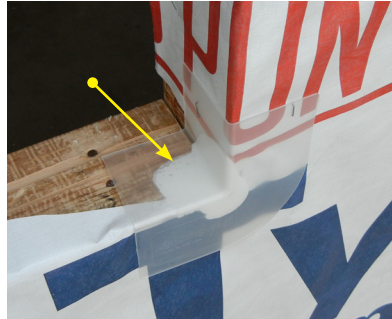
Lightning Flash Flashing Corners

Made in the USA

Lightning Flash Window Installation details using AAMA method "B1" or "A1" with pan.



Cut house wrap as shown. Fold into RO at bottom and sides, Hold up at the top of the opening.



Set (2) Lightning Flash corners into sealant at both the lower corners of the opening. Hold the SAF water proof flashing membrane 3 inches over the framing sill and stick to the wall. Cut two vertical slices into the membrane as shown; lay the flashing on to the framing sill and remove all wrinkles.



Cut two 9" squares of SAF and apply as end dams to the pan as shown. (One on each side.)



The pan system is complete.



Apply 1/2" bead of sealant to the rear of the nail fin of the window, skipping (2) gaps on the lower nail fin. Set window in RO. Window must be level, square & plumb.



Apply the side flashing, install top flashing. Wipe away excess sealant at the head of the window before the top flashing is applied. (The side flashing may be on top of side nail fins or beneath the side nail fins.) Lower the Home Wrap at the top of the window on to the top flashing; tape the seams.



Apply sealant to the inside edge of the window as shown and tool into place.

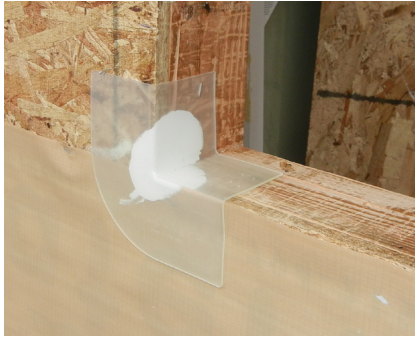


Call 800 310 7673
or visit www.tslabs.com

Lightning Flash *Flashing Corners*

Made in the USA

Lightning Flash Window Installation details using AAMA method "B" with pan.



Apply sealant at the lower corners of the RO and set the Lightning Flash corners into the sealant as shown.



Hold the SAF water proof flashing membrane 3 inches over the framing sill and stick to the wall. Cut two vertical slices into the membrane as shown; lay the flashing on to the framing sill and remove all wrinkles.



Cut two 9" squares of SAF and apply as end dams to the pan as shown. (One on each side.)



Apply side flashing as shown.



Apply 1/2" bead of sealant to the rear of the nail fin of the window, skipping (2) gaps on the lower nail fin. Set window in RO. Window must be level, square & plumb.



Sealant applied to the back of the nail fin on the window. Use two 2" gaps on lower nail fin



Apply screws every 12 - 18 inches. Wipe away excess sealant at the head of the window.



Apply the Top Flashing over the nail fin at the head of the window.



Apply sealant to the inside edge of the window as shown and tool into place.